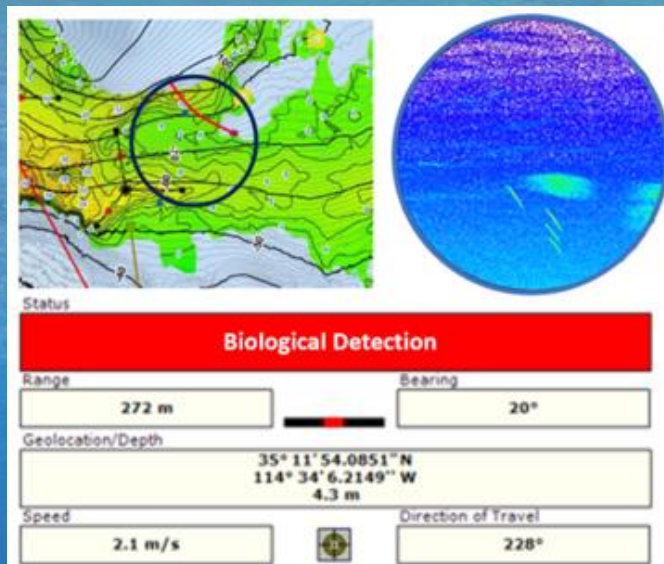
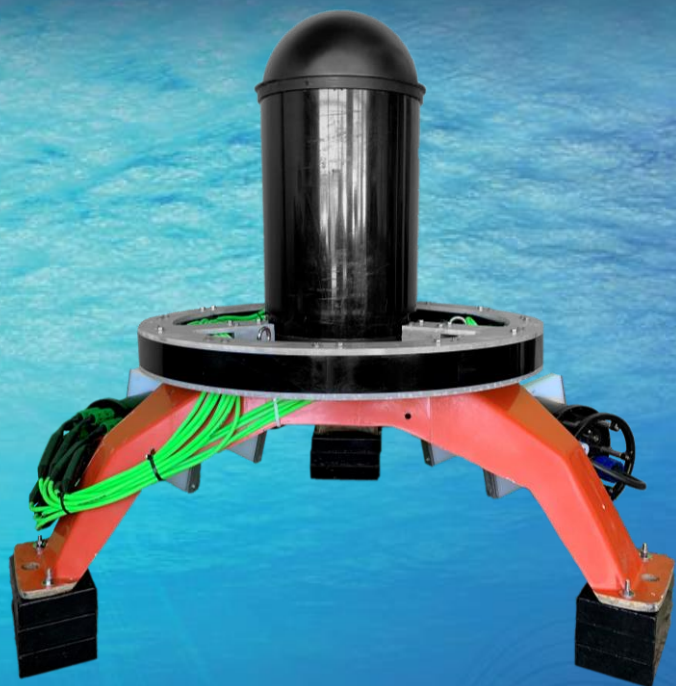


MARINE LIFE OBSERVER



A Long-Range Target Detection, Classification and Reporting System

- Marine Mammal Monitoring for Marine Renewable Energy Sites
- Early Warning of Debris and Jellyfish Intrusion at Cooling Water Intakes
- Underwater Threat Detection for Critical Waterside Infrastructure Security

Product Highlights

- Omnidirectional perimeter detection sonar
- Directed split beam tracker and classifier
- Fully autonomous or cabled operation
- Real-time analysis, alerts and summary reports
- 3-D target tracking and localization
- Marine mammal friendly low frequency sound suppression

