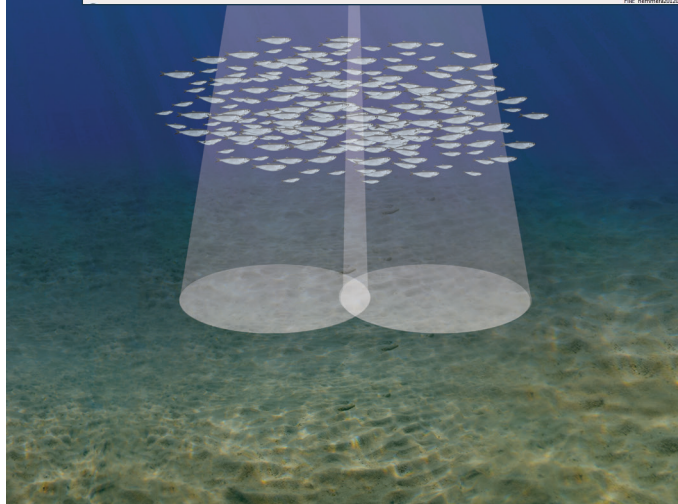
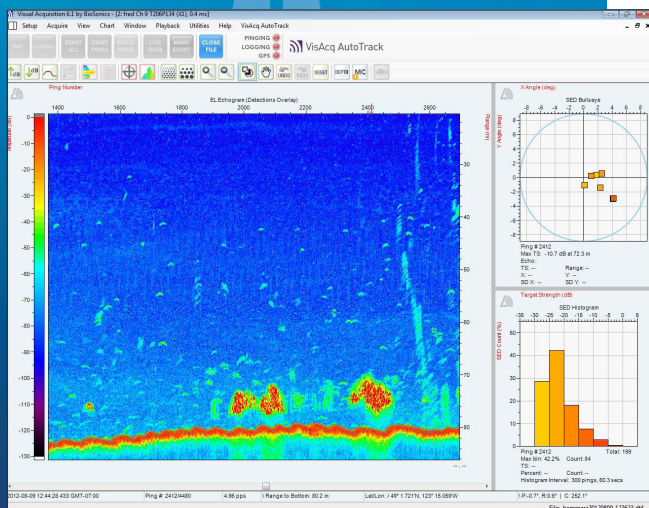
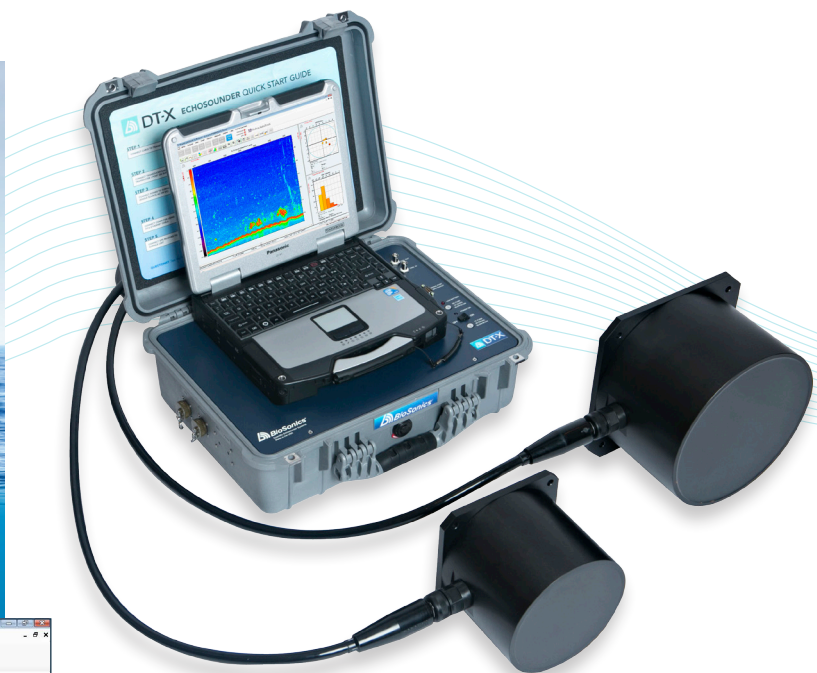




DT-X

PORTABLE SCIENTIFIC ECHOSOUNDER



Applications

- Accurate target strength (TS) measurement and location of objects in the water column
- Mobile surveys to assess fish population, biomass, and size distribution
- Seagrass mapping
- Delineate areas of mud, sand, and rock
- Aquatic habitat assessment
- Bathymetric surveys
- 316b related monitoring at water intakes
- Fixed-position, automated monitoring
- Observatory and ROV/AUV deployments

Product Highlights

- Scientific split beam technology
- Portable, rugged and weather resistant
- Multi-channel capabilities: Operate up to 10 transducers from a single echosounder
- Simultaneously collect data for fisheries and aquatic habitat assessment
- Touchscreen interface with optional Panasonic Toughbook

DT-X PORTABLE SCIENTIFIC ECHOSOUNDER

Echosounder Specifications


- Programmable LINUX-based embedded processor
- Wired or wireless ETHERNET control
- Real-time depth and speed output via NMEA 0183
- DGPS interface
- Integrated orientation sensor
- Military grade connectors
- High resolution, full color echogram
- System Noise Floor: Extremely quiet -140dB
- Dynamic Range: Greater than 160dB
- Selectable Ping Rates from 0.01 to 30 pps
- Selectable Pulse Duration: from 0.1 to 1.0 ms
- Split Beam Detection Range: 0.5 to 2,000 meters
- Transmit Power:
 - Low 100 Watts RMS
 - High 1000 Watts RMS
- Operating Power:
 - 11-14 VDC or 90-264 VAC
 - Power Consumption: 30 Watts
- Weights and Dimensions:
 - 49 cm X 39 cm X 19 cm
 - 19 in X 15 in X 8 in
 - 9 kg, 20 lbs

Digital Transducer Specifications


- Signal digitization provides improved SNR and overall superior data quality
- Wide range of frequencies:
 - 38, 70, 120, 200, 420, & 1000 kHz
- Scientific grade split beam or single beam
- Ultra-low side lobes to -35 dB
- Network up to ten separate transducers at various distinct frequencies
- Transducer signal cables from 8m to 275 m, and optional wet-mateable connectors
- Housing options in anodized aluminum, urethane, and stainless steel housings
- Weights and Dimensions:
 - 200, 400, 1000 kHz
 - 18 cm diameter X 17 cm height, 4kg
 - 7.2" diameter X 6.3" height, 9.5 lbs
 - 38, 70, 120 kHz
 - 26 cm diameter X 22 cm height, 14-17kg
 - 10.3" diameter X 8.5" height, 30-38 lbs



BioSonics Specialized Processing Software


 **Visual Acquisition** Echosounder configuration and data collection/playback

- Real-time TS distribution histogram

 **VisAcq AutoTrack** Real-time processing for fisheries applications, automated track lists

- Target tracking, direction and speed of travel

 **Visual Analyzer** Echo counting and echo integration

 **Visual Habitat** Aquatic habitat mapping and assessment, SAV and substrate classification • Automatic bottom tracking, manual editing • SAV % coverage and canopy height • Substrate classification & bathymetry maps